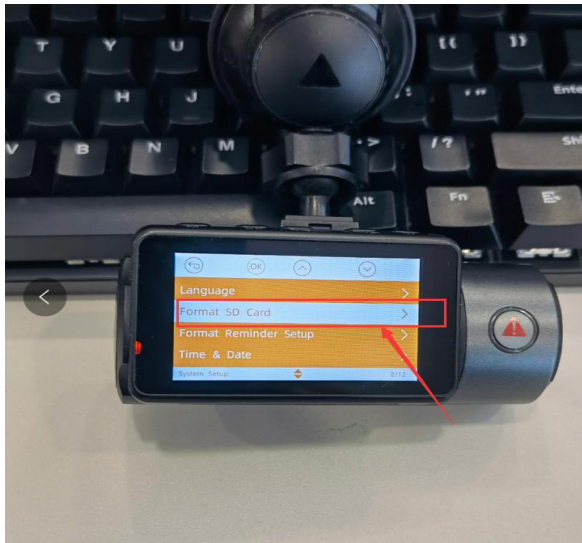


Force Firmware Update Steps for T3 dash cam

1. First make sure to format the SD card on the dash cam directly before update.

Note: If the dash cam cannot turn on, please format the SD card to FAT32 on your computer. If your computer cannot directly format the card to FAT32, it is recommended to use the following tool <https://www.diskgenius.com/> or Google to search for your local commonly used FAT32 format Tool. For Mac system , it can choose to erase, and then choose FAT and it will format directly into FAT32 format. Please refer to the bottom page of the detailed formatting tutorial.



2. All the firmware files must save at root directory of the SD card.



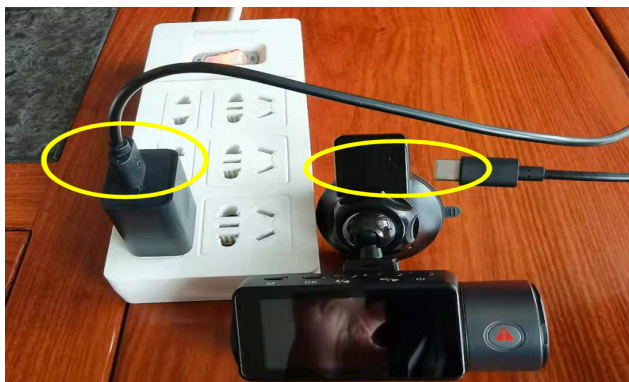
3. Plug the SD card into the cam. Before connecting the camera to power, press and hold the Mic (left) button on the left of the key area; and then connect it to power.



4. When the light indicator on the camera blinks, you can take your finger away from the button, and the camera starts to upgrade. It will take about 2 minutes till the camera upgraded successfully.

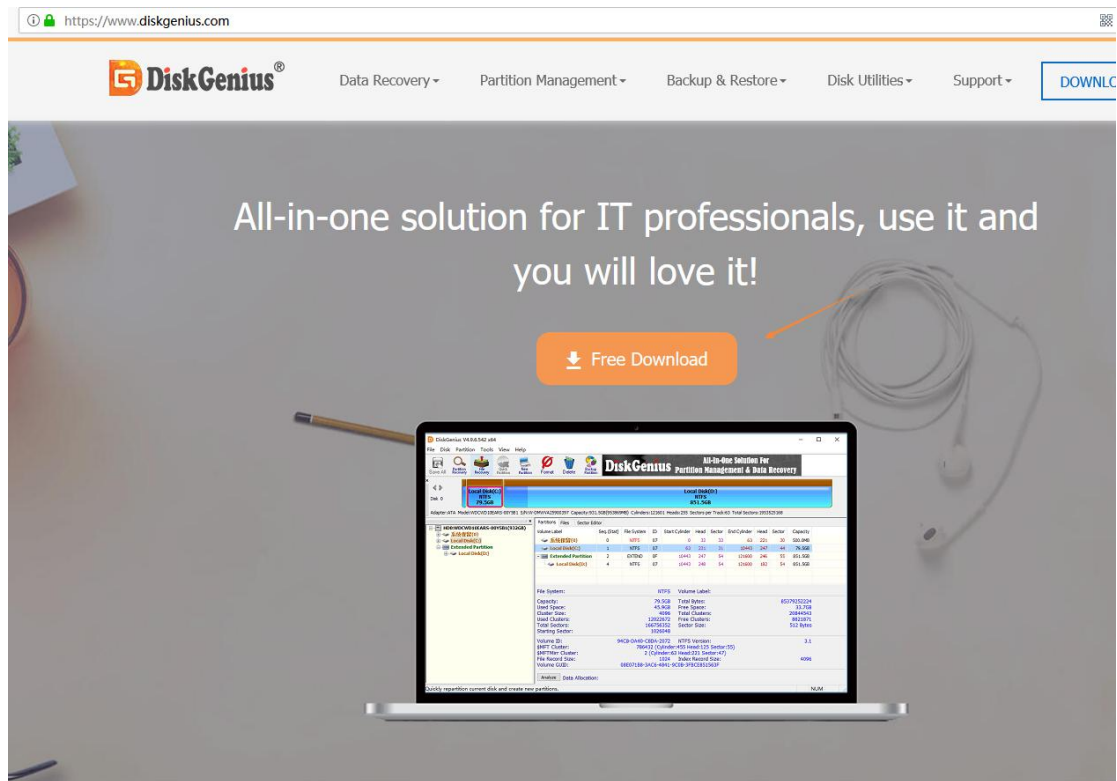


5. Please use wall charger to power the cam and charge through the usb port on the windshield mount.

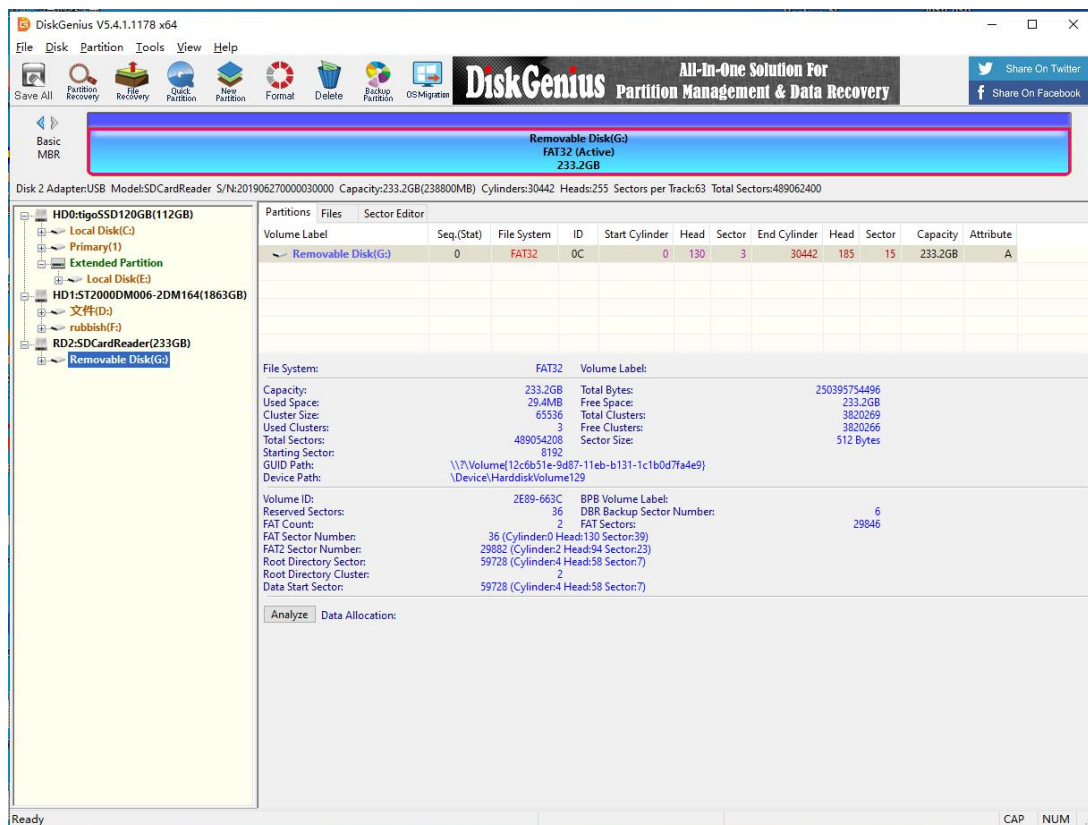


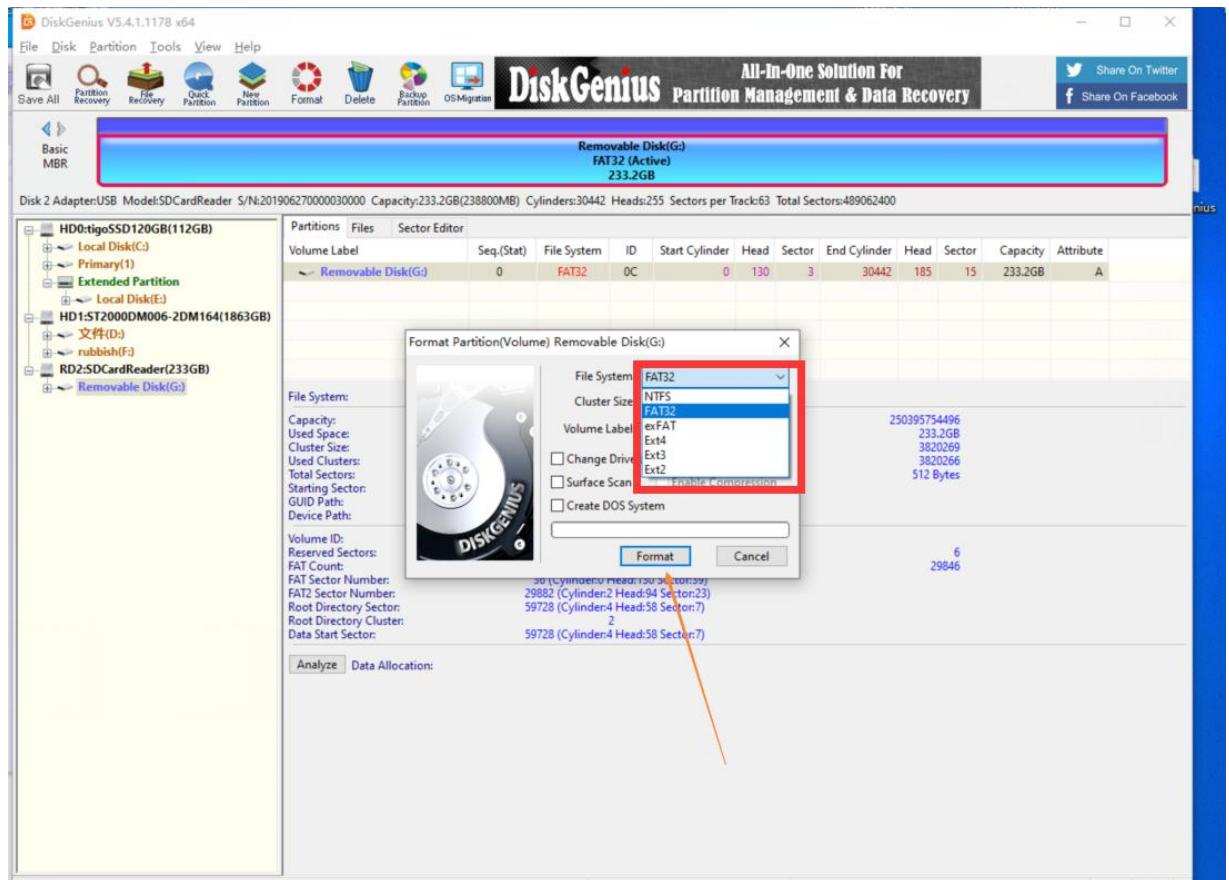
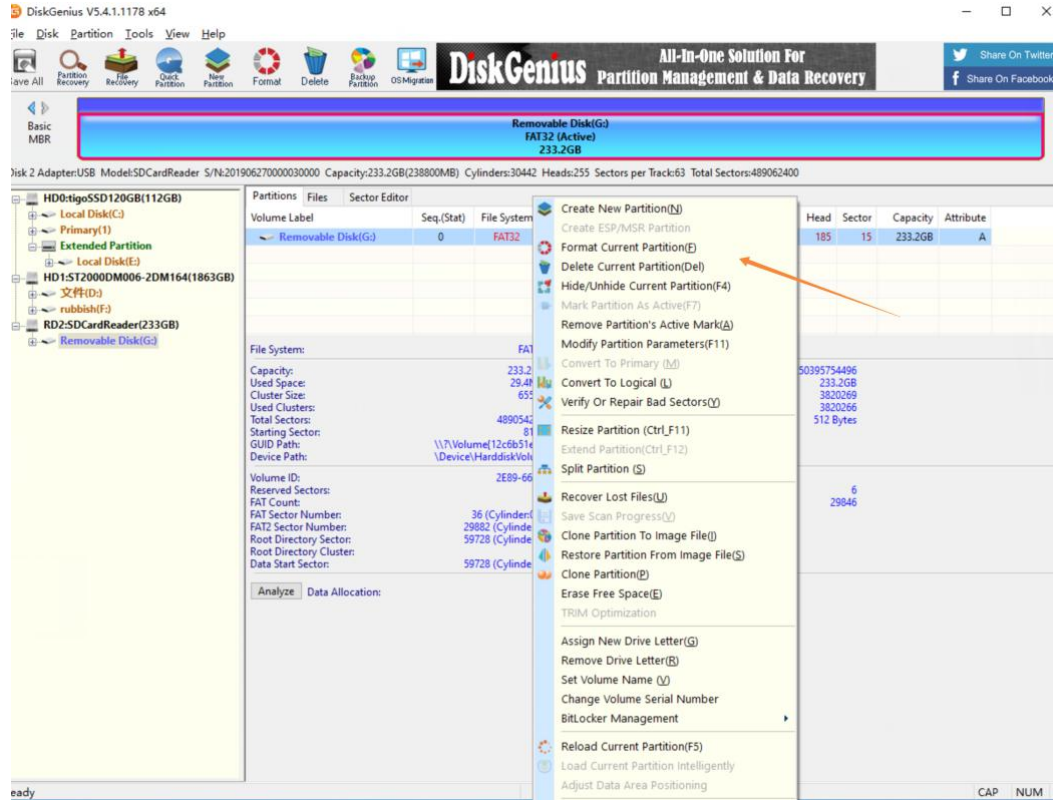
For WINDOWS User (diskgenius) :

1. Please first download from and install the software from below link
<https://www.diskgenius.com/>

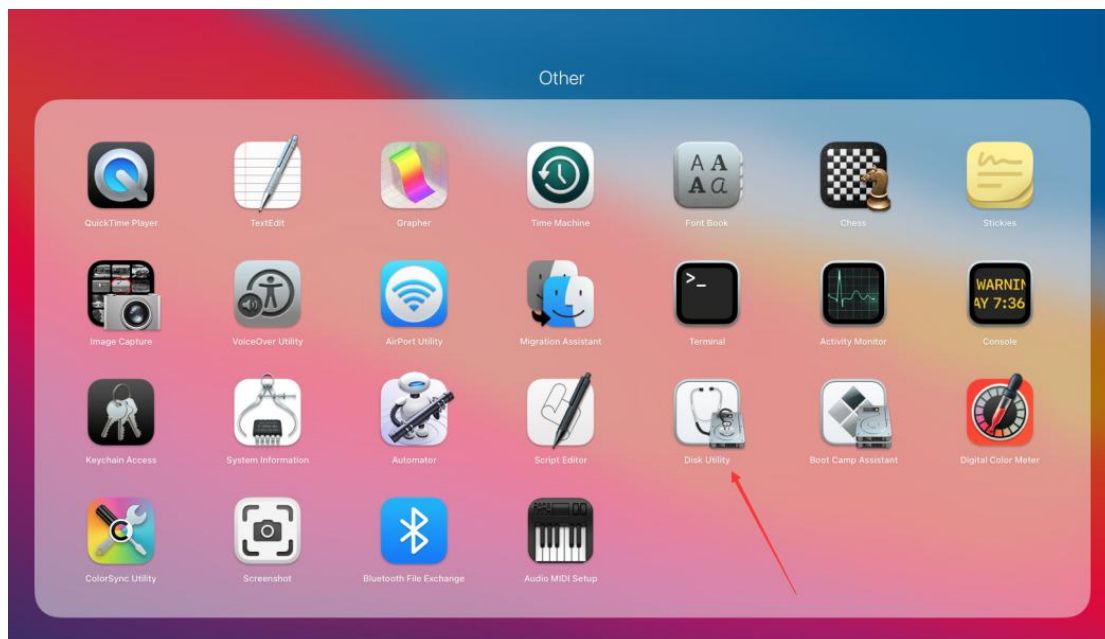


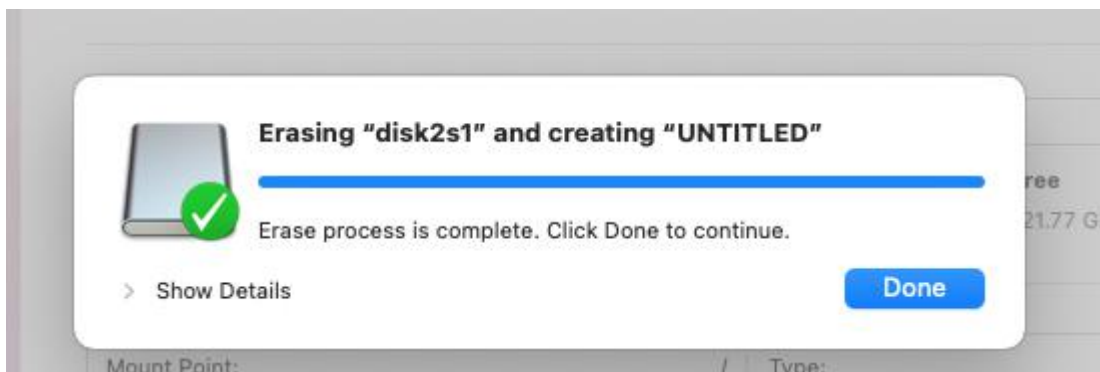
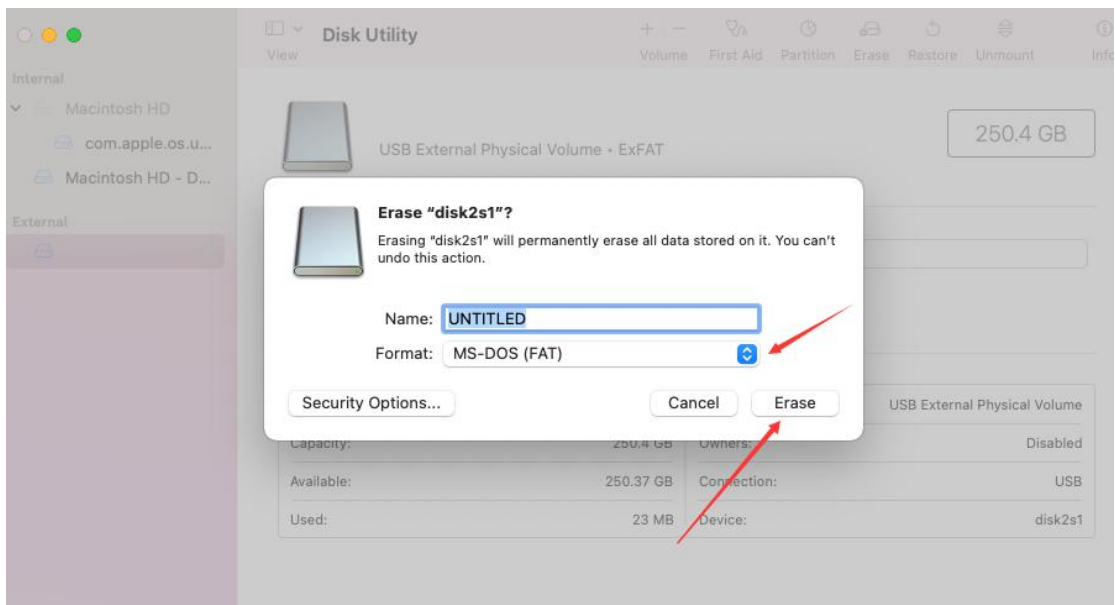
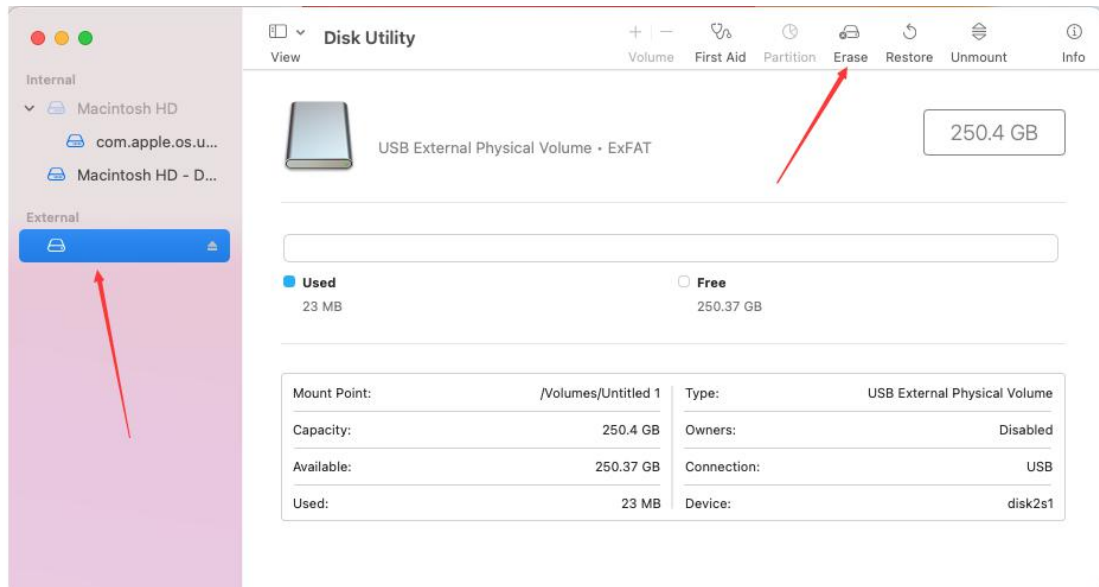
2. Open the software and select the SD card which need format

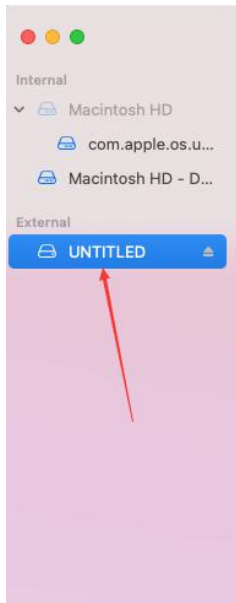




For MAC User:







Disk Utility

View

Volume First Aid Partition Erase Restore Unmount Info

UNTITLED
USB External Physical Volume • MS-DOS (FAT32) 250.4 GB

64.2 MB 250.33 GB

Mount Point:	/Volumes/UNTITLED	Type:	USB External Physical Volume
Capacity:	250.4 GB	Owners:	Disabled
Available:	250.33 GB	Connection:	USB
Used:	64.2 MB	Device:	disk2s1